

Our Relationship With Research *(and the people who do it for a living)*

A brief summary of a 37-page guide to making research activities and investments work for—rather than overwhelm—**your health organization.**

Health research can be a real asset to your organization

Research and partnerships can support organizations in achieving their objectives by helping to:

- meet organizational goals
- improve patient quality of care
- optimize organizational performance
- inform difficult management decisions
- support health equity initiatives.

But, it requires proactive action to benefit

Unless organizations take charge of research relationships, it is unlikely these benefits will be achieved, and may cost the organization time, money, and frustration.

Scalability and sustainability require big picture thinking

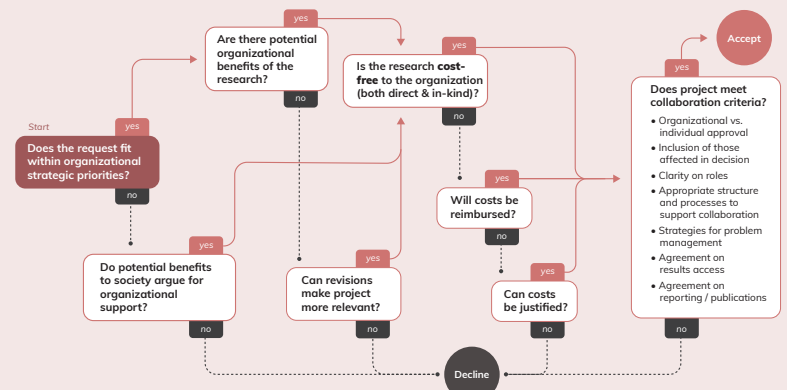
- Collaborations between individual researchers and specific staff are not sufficient (and pose potential risks)
- Organization-to-organization relationships are needed.

Clarify research priorities before making commitments

- An important first step is for organizations to clarify their priorities and keep these as a focus while negotiating research relationships
- Each organization must develop a plan appropriate to its own needs.

Consistent and clear decision-making is key; a decision tree can help

Most organizations receive unsolicited requests for researcher access to data or sites, or to partner on specific research projects. A decision-tree can assist organizations in evaluating such requests.



Full size available for download

Choose the research model that works best for your organization

There are important implications for every approach to building research capacity & responsiveness. It is important to be clear on which approach is being taken and why.

Download the Full Guide (free)

Gain insights from current evidence and health system leaders on how to:

- Identify goals of your research relationships and ensure you are ready to engage in partnership
- Develop a plan appropriate for your organization
- Build capacity and responsiveness
- Evaluate and respond to research requests
- Plan for implementation and evaluation

Download link: iktrn.ohri.ca/download/3250